



DATA SHEET FOR FLP JUNCTION BOX

TECHNICAL DATA:

- PRODUCT : CAT. NO.- RCP/221
- ENCLOSURE : FLAME PROOF (EX-d), Gas Group IIA & IIB
As per IS/IEC 60079-1 : 2014
- PROTECTION : WEATHER PROOF IP – 66 AS PER IS/IEC 60529:2001
(Reaffirmed 2014)
- AREA CLASSIFICATION : Ex db IIA,IIB T6 Gb (EX tb/tc IIIC T85 C Db/Dc
(ZONE 1 & 2 & Zone 21 & 22)
- CERTIFICATION : CIMFR, BIS, PESO
- TEMPERATURE CLASS : T 6
- MATERIAL : DIE CAST ALUMINIUM ALLOY
- FINISH : EPOXY POWDER COATED SHADE AS PER IS : 5
- EARTHING : 1 No INTERNAL & 2 No's EXTERNAL
- HARDWARE : STAINLESS STEEL
- GASKET : 'O' RING ENDLESS GASKET NEOPRENE / SILICON
- NAME PLATE : SS NAME PLATE CUM WARNING PLATE
- ENTRIES : AS PER CUSTOMER REQRMENT
- TERMINAL : COMBINATION AS PER CUSTOMER REQRMENT
- VOLTAGE : 415 V AC

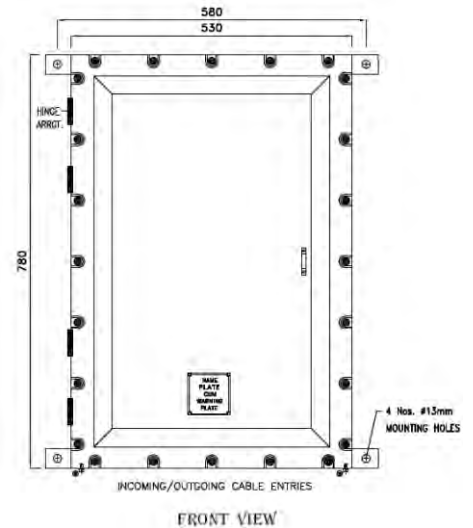


OPTIONS

SR.NO	PARTICULAR	OPTIONS
1.	MATERIAL OF CONSTRUCTION	STAINLESS STEEL
2.	GLAND/PLUG	BRASS / SS / ALUMINIUM
3.	COLOUR SHADE	631/ 632/ 355/ 7031/ 7032 etc.
4.	CANOPY	G.I / FRP
5.	INTERNAL COMPONENTS	CU./AL. BUSBAR

SELECTION CHART

SR NO	INTERNAL SIZE	TERMINAL (2.5 sq mm) (MAX)	MODEL NO
1.	750mm X 500mm X 250mm	250 Nos	B1
2.	575mm X 450mm X 250mm	200 Nos	B2
3.	452mm X 452mm X 250mm	120 Nos	B3
4.	475mm X 335mm X 190mm To 245mm	100 Nos	B4
5.	390mm X 400mm X 170mm	100 Nos	B5
6.	680mm X 620mm X 350mm	250 Nos	B6
7.	575mm X 525mm X 165mm To 275mm	200 Nos	B7





DATA SHEET FOR FLP JUNCTION BOX

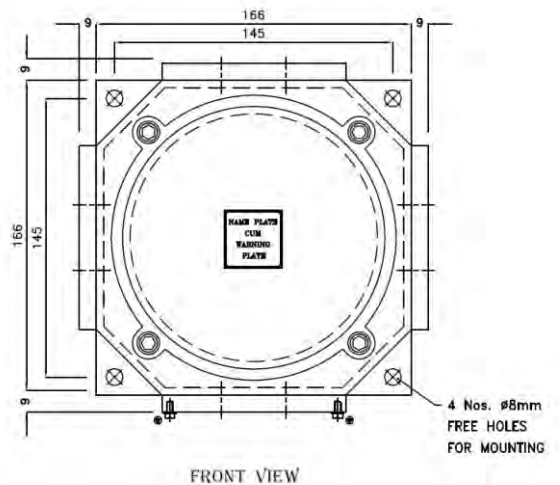
TECHNICAL DATA:

- PRODUCT : CAT.NO.- JB/2C/217
- ENCLOSURE : FLAME PROOF (EX-d), Gas Group IIA , IIB , IIC
As per IS/IEC 60079-1 : 2014
- PROTECTION : WEATHER PROOF IP – 66 AS PER IS/IEC 60529:2001
(Reaffirmed 2014)
- AREA CLASSIFICATION : Ex db IIC T6 Gb (EX tb / tc IIIC T85 C Db/Dc
(ZONE 1 & 2 & Zone 21 & 22)
- CERTIFICATION : CIMFR, BIS, PESO
- SIZE : 160mm X 160mm X 90mm DEPTH
- TEMPERATURE CLASS : T 6
- MATERIAL : DIE CAST ALUMINIUM ALLOY
- FINISH : EPOXY POWDER COATED SHADE AS PER IS : 5
- EARTHING : 1 No INTERNAL & 2 No's EXTERNAL
- HARDWARE : STAINLESS STEEL
- GASKET : 'O' RING ENDLESS GASKET NEOPRENE / SILICON
- NAME PLATE : SS NAME PLATE CUM WARNING PLATE
- ENTRIES : AS PER CUSTOMER REQUIREMENT
- VOLTAGE : 415 V AC



OPTIONS

SR.NO	PARTICULAR	OPTIONS
1.	MATERIAL OF CONSTRUCTION	STAINLESS STEEL
2.	GLAND/PLUG	BRASS / SS / ALUMINIUM
3.	COLOUR SHADE	631, 632, 355, 7031, 7032 etc.
4.	CANOPY	G.I / FRP
5.	ENTRY	AS PER CUSTOMER REQUIREMENT
6.	TERMINAL	CLIP ON TYPE TERMINAL UPTO 16 NOS OF 2.5 SQ.MM OR CUSTOMER REQUIREMENT

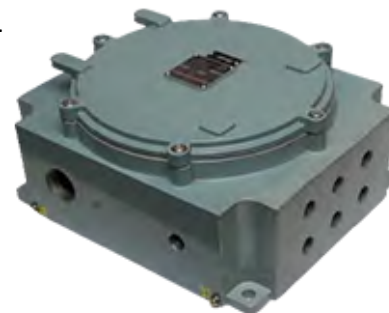




DATA SHEET FOR FLP JUNCTION BOX

TECHNICAL DATA:

PRODUCT	:	CAT. NO.- RCP/215
ENCLOSURE	:	FLAME PROOF (EX-d), Gas Group IIA & IIB As per IS/IEC 60079-1: 2014
PROTECTION	:	WEATHER PROOF IP – 66 AS PER IS/IEC 60529:2001 (Reaffirmed 2014)
AREA CLASSIFICATION	:	Ex db IIA,IIB T6 Gb(EX tb/tc IIIC T85 C Db/Dc (ZONE 1&2& Zone 21 & 22)
CERTIFICATION	:	CIMFR, BIS, PESO
TEMPERATURE CLASS	:	T 6
MATERIAL	:	DIE CAST ALUMINIUM ALLOY
FINISH	:	EPOXY POWDER COATED SHADE AS PER IS : 5
EARTHING	:	1 No INTERNAL & 2 No's EXTERNAL
HARDWARE	:	STAINLESS STEEL
GASKET	:	'O' RING ENDLESS GASKET NEOPRENE / SILICON
NAME PLATE	:	SS NAME PLATE CUM WARNING PLATE
ENTRIES	:	AS PER CUSTOMER REQRMENT
TERMINAL	:	COMBINATION AS PER CUSTOMER REQUIREMENT
VOLTAGE	:	415 V AC

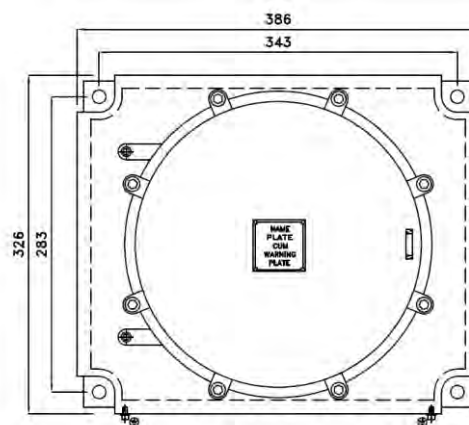


OPTIONS

SR.NO	PARTICULAR	OPTIONS
1.	MATERIAL OF CONSTRUCTION	STAINLESS STEEL
2.	GLAND/PLUG	BRASS / SS / ALUMINIUM
3.	COLOUR SHADE	631, 632, 355, 7031, 7032 etc.
4.	CANOPY	G.I / FRP
5.	INTERNAL COMPONENTS	CU./AL. BUSBAR

SELECTION CHART

SR NO	INTERNAL SIZE	TERMINAL (2.5 sq mm) (MAX)	MODEL TYPE
1.	300mm X 360mm X 110mm To 250 mm	60 Nos	B1
2.	300mm X 325mm X 110mm To 250 mm	48 Nos	B2
3.	300mm X 250mm X 110mm To 250 mm	40 Nos	B3
4.	250mm X 200mm X 110mm To 250 mm	24 Nos	B4



FRONT VIEW



DATA SHEET FOR FLP JUNCTION BOX

TECHNICAL DATA:

PRODUCT	:	CAT. NO.- MCDB/186
ENCLOSURE	:	F FLAME PROOF(EX-d), Gas Group IIA & IIB As per IS/IEC 60079-1: 2014
PROTECTION	:	WEATHER PROOF IP – 66 AS PER IS/IEC 60529:2001 (Reaffirmed 2014)
AREA CLASSIFICATION	:	Ex db IIA T6 Gb (EX tb/tc IIIC T85 C Db/Dc (ZONE 1 & 2 & Zone 21 & 22)
CERTIFICATION	:	CIMFR, BIS, PESO
TEMPERATURE CLASS	:	T 6
MATERIAL	:	DIE CAST ALUMINIUM ALLOY
FINISH	:	EPOXY POWDER COATED SHADE AS PER IS : 5
EARTHING	:	1 No INTERNAL & 2 No's EXTERNAL
HARDWARE	:	STAINLESS STEEL
GASKET	:	'O' RING ENDLESS GASKET NEOPRENE / SILICON
NAME PLATE	:	SS NAME PLATE CUM WARNING PLATE
ENTRIES	:	AS PER CUSTOMER REQUIREMENT
TERMINAL	:	COMBINATION AS PER CUSTOMER REQUIREMENT
VOLTAGE	:	415 V AC

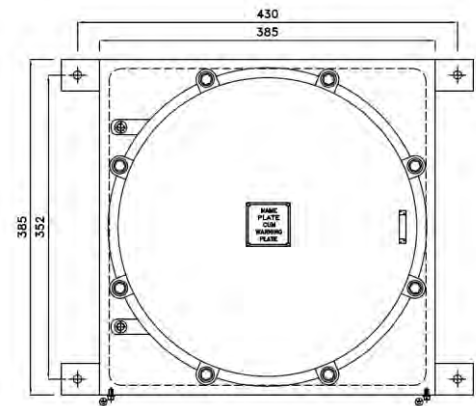


OPTIONS

SR.NO	PARTICULAR	OPTIONS
1.	MATERIAL OF CONSTRUCTION	STAINLESS STEEL
2.	GLAND/PLUG	BRASS / SS / ALUMINIUM
3.	COLOUR SHADE	631, 632, 355, 7031, 7032 etc.
4.	CANOPY	G.I / FRP
5.	INTERNAL COMPONENTS	CU./AL. BUSBAR

SELECTION CHART

SR NO	INTERNAL SIZE	NO	TERMINAL 2.5 Sq_MM (MAX)	MODEL
1.	355mm X 355mm X 110mm To 255 mm		60 Nos	B1
2.	255mm X 255mm X 110mm To 255 mm		40 Nos	B2
3.	225mm X 225mm X 110mm To 255 mm		30 Nos	B3
4.	155mm X 155mm X 110mm To 255 mm		16 Nos	B4
5.	430mm X 430mm X 140mm To 290 mm		100 Nos	B5



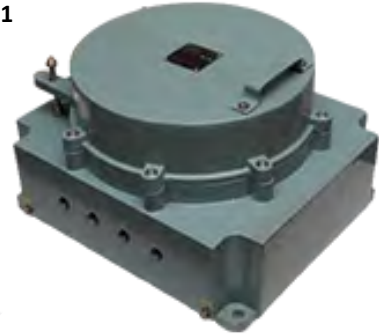
FRONT VIEW



DATA SHEET FOR FLP JUNCTION BOX

TECHNICAL DATA:

PRODUCT	: CAT. NO. – RCP/2C/2022
ENCLOSURE	: FLAME PROOF (EX-d), Gas Group IIA , IIB , IIC As per IS/IEC 60079-1 : 2014
PROTECTION	: WEATHER PROOF IP – 66 AS PER IS/IEC 60529:2001 (Reaffirmed 2014)
AREA CLASSIFICATION	: Ex db IIC T6 Gb (EX tb / tc IIIC T85 C Db/Dc (ZONE 1 & 2 & Zone 21 & 22)
CERTIFICATION	: CIMFR, BIS, PESO
TEMPERATURE CLASS	: T 6
MATERIAL	: DIE CAST ALUMINIUM ALLOY
FINISH	: EPOXY POWDER COATED SHADE AS PER IS :5
EARTHING	: 1 No INTERNAL & 2 No's EXTERNAL
HARDWARE	: STAINLESS STEEL
GASKET	: O' RING ENDLESS GASKET NEOPRENE / SILICON
NAME PLATE	: SS NAME PLATE CUM WARNING PLATE
ENTRIES	: AS PER CUSTOMER REQRUMENT
TERMINAL	: COMBINATION AS PER CUTOMER REQUIRMENT
VOLTAGE	: 415 V AC

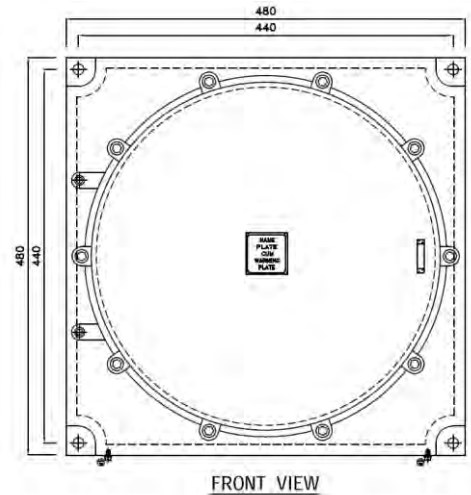


OPTIONS

SR.NO	PARTICULAR	OPTIONS
1.	MATERIAL OF CONSTRUCTION	STAINLESS STEEL
2.	GLAND/PLUG	BRASS / SS / ALUMINIUM
3.	COLOUR SHADE	631, 632, 355, 7031, 7032 etc.
4.	CANOPY	G.I /FRP
5.	INTERNAL COMPONENTS	CU/AL. BUSBAR/SWITCHGEARS COMPONENTS etc..

SELECTION CHART

SR NO	INTERNAL SIZE	L NO TERMINAL (2.5 sq mm) (MAX)	MODE
1.	430mm X 430mm X 140mm To 290mm	100 Nos	B1
2.	355mm X 355mm X 110mm To 250mm	60 Nos	B3
3.	360mm X 300mm X 110mm To 250mm	60 Nos	B4
4.	325mm X 300mm X 110mm To 250mm	60 Nos	B5
5.	300mm X 250mm X 110mm To 250mm	40 Nos	B6
6.	250mm X 200mm x 110mm To 210mm	45 Nos	B7
7.	525mm X 525mm X 190mm	200 Nos	B8

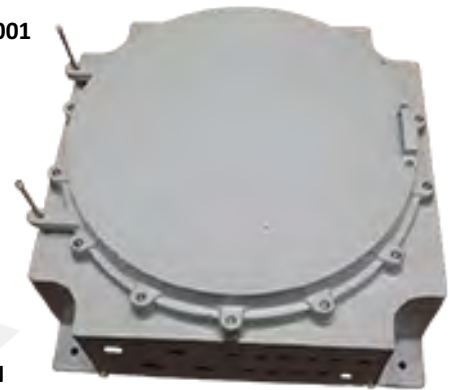




DATA SHEET FOR FLP JUNCTION BOX

TECHNICAL DATA:

- PRODUCT : CAT. NO.- RCP/222
- ENCLOSURE : FLAME PROOF(EX-d),Gas Group IIA,IIB,IIC
As per IS/IEC 60079-1 : 2014
- PROTECTION : WEATHER PROOF IP – 66 AS PER IS/IEC 60529:2001
(Reaffirmed 2014)
- AREA CLASSIFICATION : EEx db IIC T6 Gb (EX tb/tc IIIC T85 C Db/Dc
(ZONE 1 & 2 & Zone 21 & 22)
- CERTIFICATION : CIMFR, BIS, PESO
- SIZE : 615MM x 615MM x 240MM (INTERNAL)
- TEMPERATURE CLASS : T 6
- MATERIAL : DIE CAST ALUMINIUM ALLOY
- FINISH : EPOXY POWDER COATED SHADE AS PER IS : 5
- EARTHING : 1 No INTERNAL & 2 No's EXTERNAL
- HARDWARE : STAINLESS STEEL
- GASKET : 'O' RING ENDLESS GASKET NEOPRENE / SILICON
- NAME PLATE : SS NAME PLATE CUM WARNING PLATE
- ENTRIES : AS PER CUSTOMER REQRUMENT
- TERMINAL : COMBINATION AS PER COUSTOMER REQUIREMENT
- VOLTAGE : 415 V AC



OPTIONS

SR. NO	PARTICULAR	OPTIONS
1.	MATERIAL OF CONSTRUCTION	STAINLESS STEEL
2.	GLAND/PLUG	BRASS / SS / ALUMINIUM
3.	COLOUR SHADE	631, 632, 355, 7031, 7032 etc.
4.	CANOPY	G.I / FRP
5.	INTERNAL COMPONENTS	CU./AL. BUSBAR/SWITCHEGARS COMPONENTS, etc..

